



Dinkarrao K. Shinde Smarak Trust's

Dr. A.D. Shinde College of Engineering

Guddai, Bhadgaon, Tal: - Gadhinglaj, Dist: - Kolhapur

CRITERION-7.1

7.1.3



Dinkarrao K. Shinde Smarak Trust's

DR. A. D. SHINDE COLLEGE OF ENGINEERING

Gadhinglaj A/ P: Bhadgaon, Tal- Gadhinglaj, Dist- Kolhapur

Solid Waste Management

Dr. A. D. Shinde College of Engineering have followed a responsible approach to solid waste management. The waste generated on campus, including paper, plastics, metals, and organic waste, is carefully segregated at the source. We ensure that all waste is sorted into appropriate categories—recyclable, non-recyclable, and biodegradable—before collection. Once segregated, the waste is handed over to the local corporation for proper disposal, recycling, and treatment.

By partnering with the corporation, we ensure that our waste is managed in an environmentally friendly manner, promoting recycling and reducing landfill waste. This practice helps in maintaining a clean, green, and sustainable campus while contributing to the community's waste management efforts. Regular monitoring and awareness programs are conducted to ensure effective waste segregation and disposal by all stakeholders.



Dustbins to collect the various types of waste





Dinkarrao K. Shinde Smarak Trust's

DR. A. D. SHINDE COLLEGE OF ENGINEERING

Gadhinglaj A/ P: Bhadgaon, Tal- Gadhinglaj, Dist- Kolhapur



Collection of waste



Collection of waste





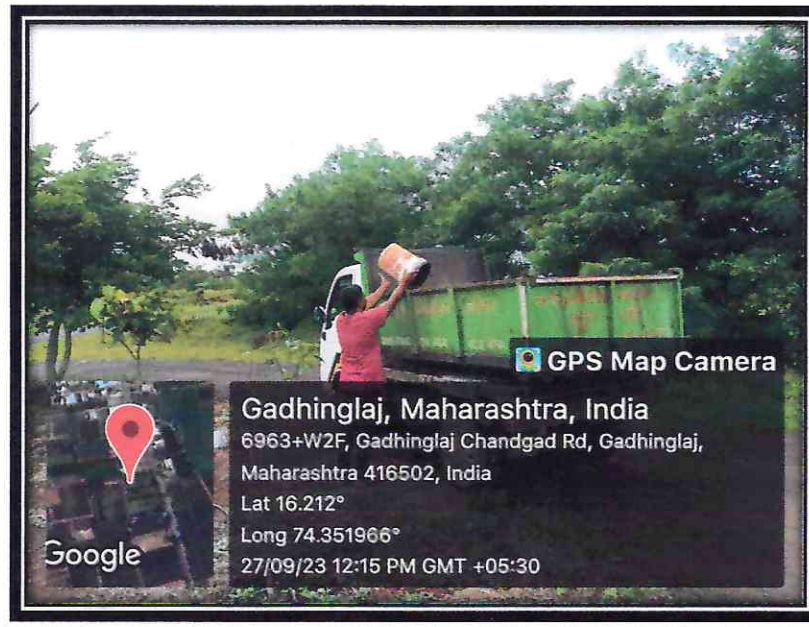
Dinkarrao K. Shinde Smarak Trust's

DR. A. D. SHINDE COLLEGE OF ENGINEERING

Gadhinglaj A/ P: Bhadgaon, Tal- Gadhinglaj, Dist- Kolhapur



Collection of waste from the college canteen



Collection of waste from the college canteen

Video - https://drive.google.com/file/d/1LEcx-U6TbKd-5t67PhsvsOk8E2IPSSsm/view?usp=drive_link




PRINCIPAL
A.D. Shinde College of Engineering
Bhadgaon, Tal. Gadhinglaj, Dist. Kolhapur



Dinkarrao K. Shinde Smarak Trust's

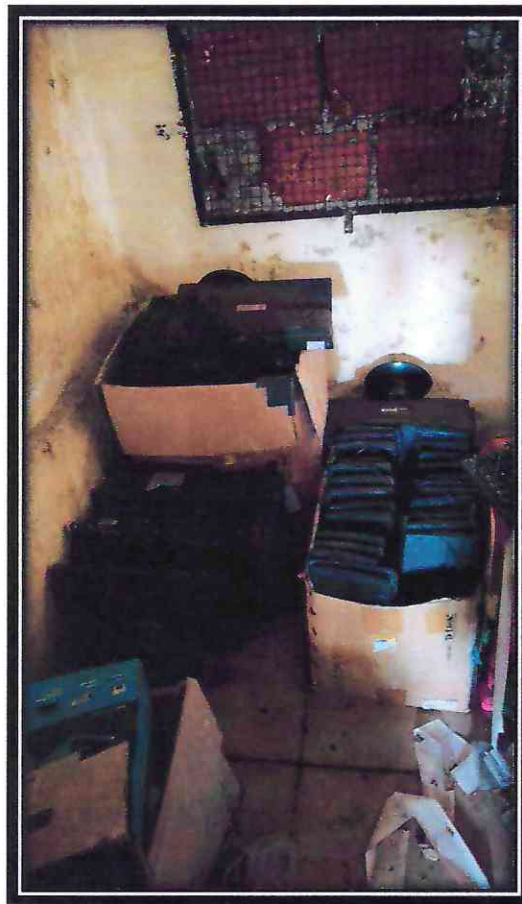
DR. A. D. SHINDE COLLEGE OF ENGINEERING

Gadhinglaj A/ P: Bhadgaon, Tal- Gadhinglaj, Dist- Kolhapur

E- Waste Management

Dr. A. D. Shinde College of Engineering have a systematic approach to e-waste management. Electronic waste (e-waste) such as old computers, mobile phones, batteries, and other electronic devices are carefully collected and segregated. Instead of disposing of this waste improperly, we ensure it is handed over to the local corporation for safe and responsible disposal or recycling.

The corporation handles the e-waste by either refurbishing usable devices or recycling valuable materials like metals and plastics, while ensuring the harmful components are disposed of safely to prevent environmental contamination. This initiative helps reduce e-waste accumulation, promotes recycling, and contributes to sustainability. Regular awareness programs are conducted to educate students and staff about the importance of responsible e-waste disposal.



E-Waste Collection





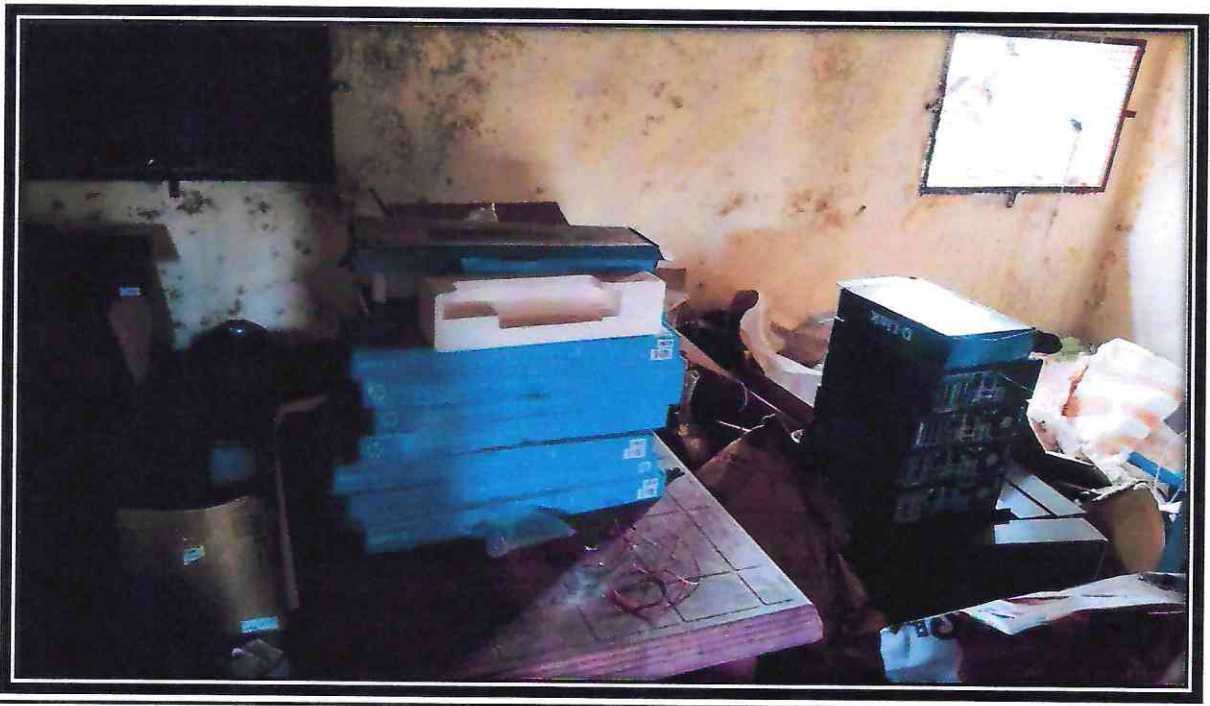
Dinkarrao K. Shinde Smarak Trust's

DR. A. D. SHINDE COLLEGE OF ENGINEERING

Gadhinglaj A/ P: Bhadgaon, Tal- Gadhinglaj, Dist- Kolhapur



E-Waste Collection



E-Waste Collection





Dinkarrao K. Shinde Smarak Trust's


DR. A. D. SHINDE COLLEGE OF ENGINEERING

Gadhinglaj A/ P: Bhadgaon, Tal- Gadhinglaj, Dist- Kolhapur

Liquid Waste Management

Dr. A. D. Shinde College of engineering has provided the “**Septic Tank**” underground for effective liquid waste management. The septic tank collects wastewater from toilets, kitchens, and laboratories, where solids are separated, and the liquid effluent is partially treated. The treated effluent then flows into a drain field or soak pit for further filtration by the soil. This system ensures localized wastewater treatment, reduces environmental impact, and requires minimal maintenance. Regular pumping and proper waste disposal practices are essential for its efficient functioning.




PRINCIPAL
A.D. Shinde College of Engineering
Bhadgaon, Tal. Gadhinglaj, Dist. Kolhapur